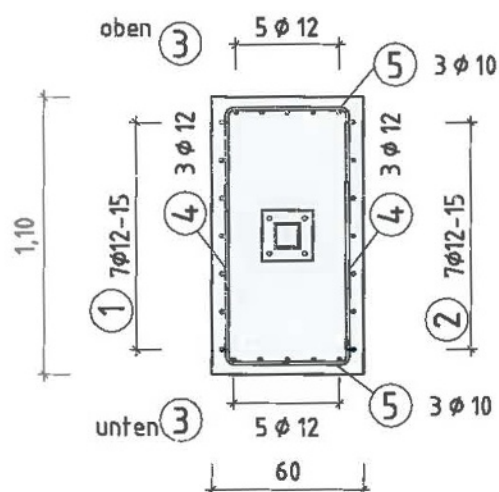
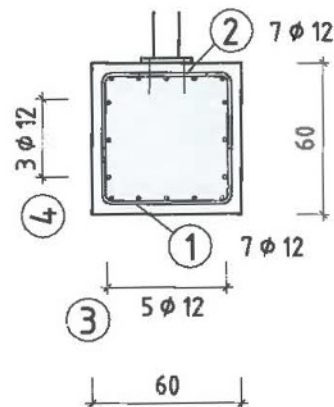


Grundriss

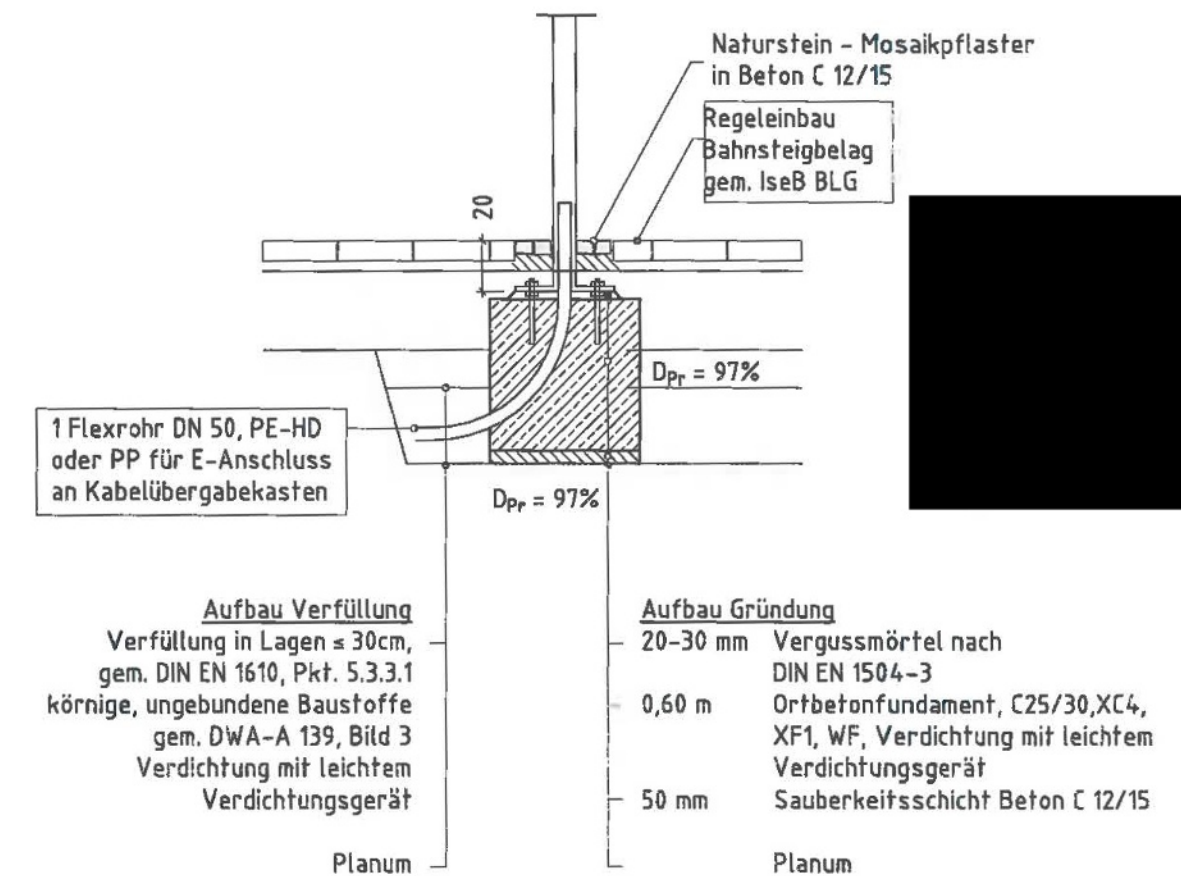
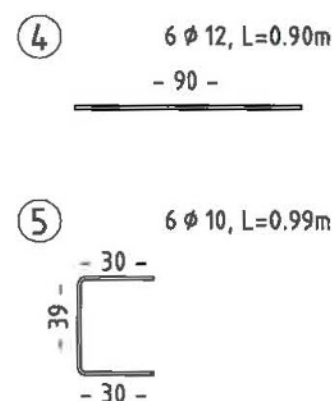
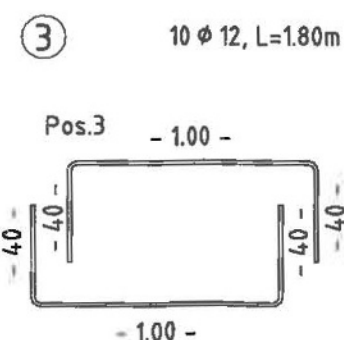
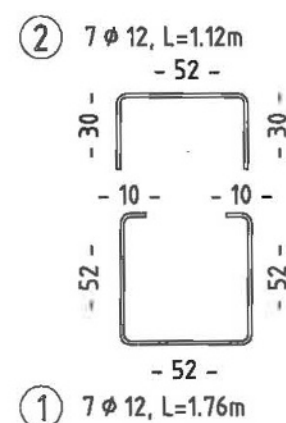
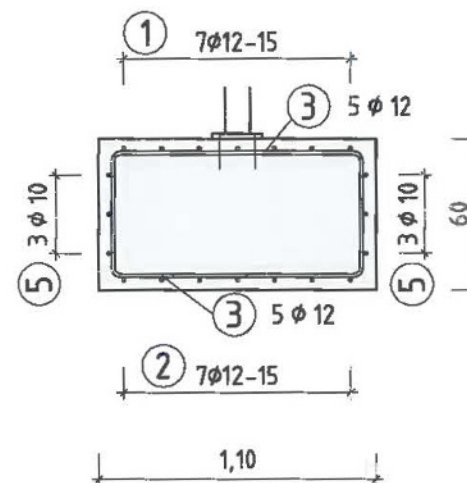
Technical drawing of a display case (Vitrine) showing a cross-section and a top view. The cross-section shows a double-paneled door with a handle and a lock mechanism. The top view shows the door's width and depth. Dimensions are given in millimeters: 90 mm for the door width, 60 mm for the door depth, and 1,10 mm for the door thickness. The handle is labeled "Flexrohr DN 50 PE-HD oder PP".

Draufsicht

Schnitt A-A



Schnitt B-B



- Beton C25/30 XC4, XF1, WF - 0,40 m³
- Betonstahl B 500 B - 42,50 kg
- Betondeckung: nom c = 4,0 cm, min c = 2,5 cm
- Abstandshalter: Faserbeton
- Sauberkeitsschicht: C12/15 - 0,70 m²

(Mengenangaben beziehen sich auf je 1 Fundament!)

Maßgebende Regelwerke:	VOB C DIN 18331 DIN EN 1992-1-1 DIN EN 1997-1	Betonarbeiten Eurocode 2 Eurocode 7	
3			
2			
1			
Nr.	Änderungen bzw. Ergänzungen	Datum	Name
	Vitrinen DIN A1, Fundament Bewehrungsplan Windlastzone 3+4 BSK-Bauweise	Ersteller: DB Station&Service AG Anlagentechnik/Anlagenmanagement (I.SBA(3)) Europaplatz 1, 10557 Berlin	
		REGELEINBAU	
Maßstab: 1:30		I s e B	V i t 3 3
		Ausgabe vom:	24.11.2015
		Ersatz für:	